

With this Package You install the detailed scenery for the Estland airports:
(For further Info see: <http://en.wikipedia.org/wiki/Estonia>)

EETN Tallin



EEMU Parnu



EETU Tartu

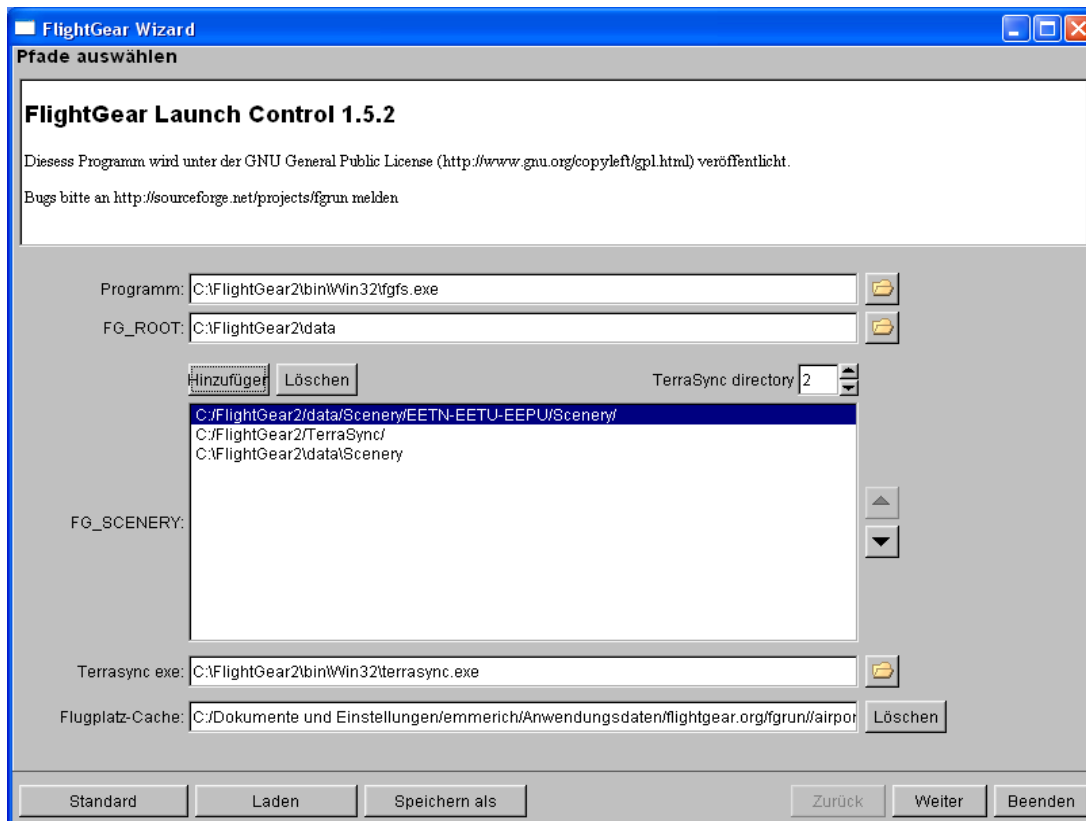


All Data in this package are per-structured as needed in FlightGear.

The easiest way to install this package is:

1. UN-ZIP that package and save the complete “EETN-EETU-EEMU”-Directory to a place you want (*I suggest for that the &FG_ROOT/Scenery – as shown in the following descriptions*).
2. Merge the sub-directory “EETN-EETU-EEMU/AI” into your existing “\$FG_ROOT/AI”-directory. That will add the newly created “Parking-Lots”, so that you do not need to startup on the runways.
3. When activating this new scenery, take care that:
 - The EETN-EETU-EEMU/scenery is prime
 - after that you insert the TerraSync directory (if you use TerraSync).
 - place the standard Scenery-directories at the end
4. That way
 - you can easily deactivate that scenery again by just deleting that entry or moving its priority, if not wanted/needed any more
 - and you are still able to receive all (e.g. TerraSync-) updates as usual and without destroying this EETN-EETU-EEMU-package.

Activating in FGRun:



- Add the new package by clicking onto “Add..” (*here the German “Hinzufügen”*) and selecting the “EETN-EETU-EEUP/Scenery” directory
- You change the priority by the ▲ ▼ at the right side of the field “FG_SCENERY:”
- Make sure in the “TerraSync directory” field is the line-number of the TerraSync directory (if you use TerrySync).

Activating in a command-line or command-file:

Add the scenery-option e.g. like:

```
--fg-scenerie=C:/FlightGear2/Scenery/EETN-EETU-EEPU/;C:/FlightGear2/TerraSync/;C:/FlightGear2/data/Scenery/
```

(the above is 1 line!)

Watch the signs in between the different directories:

- in Windows that is an “;”
- in Linux that is an “:”.

In case the Model does not show up, make sure the scenery token e020n50 is installed in the usual manner.

In some time this model will be included in the standard sceneries.

Have fun with that new Scenery.